

ETMN AD 2.1 Aerodrome Location Indicator and Name

ETMN – NORDHOLZ
(See-Flughafen Cuxhaven/Nordholz)

ETMN AD 2.2 Aerodrome Geographical and Administrative Data

1	ARP coordinates and site at AD	53°46.0570'N 008°39.5112'E Centre of RWY
2	Direction and distance from (city)	1 NM 120° from Nordholz
3	Elevation/Reference temperature	73 ft (22 m) 20.9 °C
4	Geoid undulation at AD ELEV PSN	NIL
5	MAG VAR/Annual change	2.22°E (2017)/0.14°E
6	AD Administration Address Telephone Telefax AFS E-mail	<i>mil:</i> GERMAN NAVY <i>civ:</i> Permanent civil co-utilization: Flughafen-Betriebsgesellschaft Cuxhaven/Nordholz mbH <i>mil:</i> Marinefliegergeschwader 3 "Graf Zeppelin" Flugbetriebsstaffel Nordholz Peter-Strasser-Platz 1 27639 Wurster Nordseeküste <i>civ:</i> Flughafen-Betriebsgesellschaft Cuxhaven/Nordholz mbH Nordholz Walther-Carstens-Str. 1 27639 Wurster Nordseeküste <i>mil:</i> +49 4741 94-12721 / 12722 FspNBw 2513-12721 / 12722 For PPR Extn 24700 / 24705 <i>civ:</i> +49 4741 1818-0 /1818-16 <i>mil:</i> +49 4741 94-12729 FspNBw 2513-12729 <i>civ:</i> +49 4741 1818-18 <i>mil:</i> ETMNZPZX <i>civ:</i> Not available <i>mil:</i> FlugberatungNordholz@bundeswehr.org <i>civ:</i> mail@sea-airport.com
7	Types of traffic permitted (IFR/VFR)	IFR / VFR
8	Remarks	NIL

NORDHOLZ

ETMN AD 2.3 Operational Hours

1	Aerodrome operator	<i>mil:</i> MON-THU 0700-1600++ FRI 0700-1200++ CLSD HOL <i>civ:</i> MON-THU 0700-1600++ FRI 0700-1200++ O/T 12 h PPR
2	Customs and immigration	<i>mil:</i> HO, Customs O/R 3 h <i>civ:</i> O/R
3	Health and sanitation	<i>mil:</i> HO <i>civ:</i> NIL
4	AIS Briefing Office	<i>mil:</i> HO <i>civ:</i> H24, EDDZ TEL: +49 69 78072-500
5	ATS Reporting Office (ARO)	HO
6	MET Briefing Office	<i>mil:</i> HO <i>civ:</i> H24
7	ATS	HO
8	Fuelling	HO
9	Handling	HO
10	Security	<i>mil:</i> H24 <i>civ:</i> O/R
11	De-icing	<i>mil:</i> HO <i>civ:</i> O/R
12	Remarks	NIL

ETMN AD 2.4 Handling Services and Facilities

1	Cargo-handling facilities	<i>mil:</i> Available <i>civ:</i> O/R
2	Fuel/oil types	<i>mil:</i> F-34, H-515, H-537, O-133, O-135, O-138, O-148, O-156, O-160 <i>civ:</i> JET A-1 AVGAS 100LL / OIL: all grades PPR
3	Fuelling facilities/capacity	<i>mil:</i> Fuel trucks <i>civ:</i> Fuel trucks
4	De-icing facilities	<i>mil:</i> Fluids: TL 6850-0043 <i>civ:</i> O/R
5	Hangar space for visiting aircraft	<i>mil:</i> O/R <i>civ:</i> O/R
6	Repair facilities for visiting aircraft	<i>mil:</i> P3, LYNX, D228, S61 <i>civ:</i> only for: EC135, EC120, AS350, BO105, R44, R22
7	Oxygen	<i>mil:</i> OXRB <i>civ:</i> Not available
8	Aircraft starting units	<i>mil:</i> G-40, MSU-E200T, PRESAIR, Starting fluids: S-1744 <i>civ:</i> GPU 100 KVA
9	Remarks	<i>mil:</i> De-icing only for acft not bigger than A400M. <i>civ:</i> De-icing only for acft not bigger than A400M.

ETMN AD 2.5 Passenger Facilities

1	Hotels	mil: Military accommodation in quartering area (limited capacity). civ: In Nordholz, Cuxhaven
2	Restaurants	In Nordholz, Cuxhaven
3	Transportation	Bus, Taxi, Railway
4	Medical facilities	mil: Dispensary, 2 ambulances civ: DRK, Integrierte Regionalleitstelle Unterweser-Elbe in Bremerhaven
5	Bank and Post Office	In Nordholz, Cuxhaven
6	Tourist Office	In Nordholz, Cuxhaven
7	Remarks	NIL

ETMN AD 2.6 Rescue and Fire Fighting Services

1	AD category for fire fighting	Cat 8
2	Rescue equipment	NIL
3	Capability for removal of disabled aircraft	2 cranes
4	Remarks	NIL

ETMN AD 2.7 Seasonal Availability – Clearing

1	Types of clearing equipment	Available
2	Clearance priorities	RWY, TWY "S", TWYs, APRON
3	Remarks	All year round usable, information on snow clearance published by SNOWTAM.

NORDHOLZ

ETMN AD 2.8 Aprons, Taxiways and Check Locations/Positions Data

1	Apron surface and strength	Concrete, LCN 82
2	Taxiway width, surface and strength	MAIN 22.5 m, concrete, LCN 120 NORTHERN 16 m, concrete, LCN 120 SOUTHERN 13 m, concrete, LCN 114 CIVIL 23 m, concrete, PCN 101
3	Altimeter checkpoint location and elevation	A1: 53°45.86'N 008°38.41'E, 63 ft D1: 53°46.13'N 008°40.65'E, 35 ft
4	VOR checkpoints	Not available
5	INS checkpoints	A1: 53°45.86'N 008°38.41'E, D1: 53°46.13'N 008°40.65'E,
6	Remarks	NIL

ETMN AD 2.9 Surface Movement Guidance and Control System and Markings

1	Use of aircraft stand ID signs, TWY guide lines and visual docking/parking guidance system of aircraft stands	Follow-me car, taxiway markers, taxiway signs (lighted)
2	RWY and TWY markings and LGT	RWY designator, -centre line, TWY centre line
3	Stop bars	NIL
4	Remarks	NIL

ETMN AD 2.10 Aerodrome Obstacles

See AD 2 ETMN 2 - 1 AERODROME CHART

ETMN AD 2.11 Meteorological Information Provided

1	Associated MET Office	<i>mil:</i> METO ETMN <i>civ:</i> MAC North (Hamburg), TEL: 0900 10 77 22 1 ¹
2	Hours of service MET Office outside hours	<i>mil:</i> HO <i>civ:</i> H24 <i>mil:</i> DEU NAVY HQ, METOC FC, Glücksburg
3	Office responsible for TAF preparation Periods of validity	ETMN See MIL AIP GEN 3.5 para 4.7
4	Trend forecast Interval of issuance	Colour state trend
5	Briefing/consultation provided	<i>mil:</i> General weather briefing, weather briefing verbal and by phone. <i>civ:</i> Selfbriefing facilities in responsibility of AD administration.
6	Flight documentation Language(s) used	Charts, abbreviated plain language text German/English
7	Charts and other information available for briefing or consultation	<i>mil:</i> Chart Display, additional charts on request. <i>civ:</i> Further information available by FAX on demand service: +49 69 80 62 44 84
8	Supplementary equipment available for providing information	<i>mil:</i> Data display
9	ATS units provided with information	TWR, RADAR
10	Additional information (limitation of service, etc.)	<i>mil:</i> METO ETMN, TEL: +49 4741 94-12840, FspNBw 2513-12840 FAX: +49 4741 94-12809, FspNBw 2513-12809 <i>civ:</i> Individual weather consultation: ACA North TEL: 0900 10 77 22 1 ¹ ¹ Value-added service prices see AIP GEN 3.5 - 13

ETMN AD 2.12 Runway Physical Characteristics

RWY Designator	True BRG	Dimensions of RWY (m)	Strength (PCN) and surface of RWY and SWY	THR coordinates RWY end coordinates THR geoid undulation	THR elevation and highest elevation of TDZ of precision APP RWY
1	2	3	4	5	6
08	078.51°	2440 x 45	RWY PCN 86/F/A/W/T asphalt	53°45.92608'N 008°38.42350'E	THR 68.5 ft TDZ 72.4 ft
26	258.54°	2440 x 45	SWY 26 PCN 90/R/B/W/T concrete	53°46.18782'N 008°40.59905'E	THR 40.9 ft TDZ 63.5 ft

Slope of RWY-SWY	SWY dimensions (m)	CWY dimensions (m)	Strip dimensions (m)	OFZ	Remarks
7	8	9	10	11	12
0.2% / -0.3% / -0.8% 650 m / 850 m / 940 m	Not available	Not available			
0.8% / 0.3% / -0.2% / -0.8% 940 m / 850 m / 650 m / 275	275 x 45	275 x 150	2835 x 300	NIL	NIL

ETMN AD 2.13 Declared Distances

RWY Designator	TORA (m)	TODA (m)	ASDA (m)	LDA (m)	Remarks
1	2	3	4	5	6
08	2440	2440	2440	2440	NIL
26	2440	2715	2715	2440	NIL

ETMN AD 2.14 Approach and Runway Lighting

RWY Designator	APCH LGT type length INTST	THR LGT colour WBAR	VASIS (MEHT) PAPI	TDZ LGT length	RWY Centre Line LGT length spacing colour INTST	RWY Edge LGT length spacing colour INTST	RWY End LGT colour WBAR	SWY LGT length colour	Remarks
1	2	3	4	5	6	7	8	9	10
08	NATO-standard White LIH AFLS	Green	PAPI 3.0°	NIL	0-1500m White, 1500m-2100m Red/ White, 2100m-2400m Red, 32m LIH	White LIH Distance from RWY edge 2m	Red	Not available	Red lights at OVRN.
26	Modified NATO-standard White LIH AFLS	Green	PAPI 3.0°	NIL	0-1500m white, 1500m-2100m red/ white, 2100m-2400m red, 32m LIH	White LIH Distance from RWY edge 2m	Red	Not available	Red lights at OVRN.

NORDHOLZ

ETMN AD 2.15 Other Lighting, Secondary Power Supply

1	ABN/IBN location, characteristics and hours of operation	ABN: white/green
2	LDI location and LGT Anemometer location and LGT	53°45.86'N 008°39.29'E, 214° (T) 438 m from TWR
3	TWY edge and centre line lighting	Blue, LIL
4	Secondary power supply/switch-over time	Available (runway and taxiways) / 3 sec
5	Remarks	Obstruction marking and lighting available.

ETMN AD 2.16 Helicopter Landing Area

1	Coordinates TLOF or THR of FATO Geoid undulation	NIL
2	TLOF and/or FATO elevation	NIL
3	TLOF and FATO area dimensions, surface, strength, marking	NIL
4	True BRG of FATO	NIL
5	Declared distance available	NIL
6	APP and FATO lighting	NIL
7	Remarks	Not defined. As directed by TWR.

ETMN AD 2.17 ATS Airspace

1	Designation and lateral limits	Nordholz CTR see AIP Germany ENR 2.1
2	Vertical limits	GND-2600 ft MSL
3	Airspace classification	D
4	ATS unit call sign Language(s)	NORDHOLZ TOWER German, English
5	Transition altitude	5000 ft MSL
6	Remarks	Times of activity: HX

ETMN AD 2.18 ATS Communication Facilities

Service designation	Call sign	Frequency	Hours of operation	Remarks		
1	2	3	4	5		
RADAR	NORDHOLZ RADAR	243.000 MHz	HO	Emergency frequencies for all services		
		121.500 MHz	HO			
		278.350 MHz	HO	SSR-Mode Codes 3/A 4240-4247		
		356.125 MHz	HO			
		123.300 MHz	HO			
		TWR	NORDHOLZ TOWER	129.850 MHz	HO	Maintenance period: FRI 0700-0800++
				141.600 MHz	HX	
376.125 MHz	HX			Civil contact frequency		
315.700 MHz	HO					
257.800 MHz	HO					
		142.900 MHz	HO			
		122.100 MHz	HO			
		131.250 MHz	HO			

ETMN AD 2.19 Radio Navigation and Landing Aids

Type of aid MAG VAR, Type of supported OPS (for VOR/ILS/ MLS give declination)	ID	Frequency	Hours of operation	Position of transmitting antenna coordinates	Elevation of DME transmitting antenna	Remarks
1	2	3	4	5	6	7
NDB (2°E/2016)	NDO	372.000 kHz	H24	53°47.1093'N 008°48.3732'E	120 ft	079°(T), 4.7 NM from THR RWY 26. Rated coverage: 24 NM.
TACAN (2°E/2016)	NDO	CH 118X	H24	53°46.1389'N 008°39.2131'E		295°(T), 0.20 NM from ARP. Designated operational coverage: 000°-270°, 60 NM, FL 500 270°-360°, 180 NM, FL 500. Unreliable between R-020 - R-060 beyond 20 NM at and below 3000 FT MSL. Restrictions at 20NM/2000ft QNH: TACAN azimuth unlocks -btn R-199 and R-201 -btn R-337 and R-020
ILS 26 CAT I			H24			
LOC (2°E/2016)	INOW	111.750 MHz		53°45.8773'N 008°38.0180'E		LOC course 257°
GP		333.350 MHz		53°46.0961'N 008°40.3844'E		Glide path angle: 3°
OM	Dashes	75.000 MHz		53°47.1135'N 008°48.3943'E		4.7 NM from threshold RWY 26
MM	Dots and dashes	75.000 MHz		53°46.3035'N 008°41.4749'E		0.5 NM from threshold RWY 26

NORDHOLZ

ETMN AD 2.20 Örtliche Besonderheiten

1. Übungsanflüge sind von 1100-1300++ verboten.
2. Vogelflug im Gebiet Nordholz.
3. Windkraftanlagen entlang den VFR-Flugstrecken über SIERRA und NOVEMBER sowie in der gesamten Umgebung.

ETMN AD 2.21 Verfahren zur Lärmvermeidung

1. Kurs RWY HDG bis Überfliegen von 1000 ft MSL.

ETMN AD 2.22 Flugverfahren

1. IFR-Verfahren

Die Instrumentenanflug- und Instrumentenabflugverfahren wurden gemäß den auf der jeweiligen Verfahrensseite angegebenen Kriterien erstellt.

2. LVTO-Verfahren

Low Visibility Take-Off Verfahren während der allgemeinen Platzöffnungszeit ab einer Mindestsichtweite (RVR) von 100 m.

ETMN AD 2.23 Zusätzliche Informationen

NIL

ETMN AD 2.20 Local Traffic Regulations

1. Practice approaches are prohibited from 1100-1300++.
2. Bird flying within Nordholz area.
3. Wind power plants along VFR-Routes via SIERRA and NOVEMBER as well as in the entire vicinity.

ETMN AD 2.21 Noise Abatement Procedures

1. Proceed on RWY heading until passing 1000 ft MSL.

ETMN AD 2.22 Flight Procedures

1. IFR procedures

The instrument approach and departure procedures are established in accordance with the criteria stated on the individual procedure chart.

2. LVTO procedures

Low Visibility Take-Off procedures during general ad operational hours with minimum RVR 100 m.

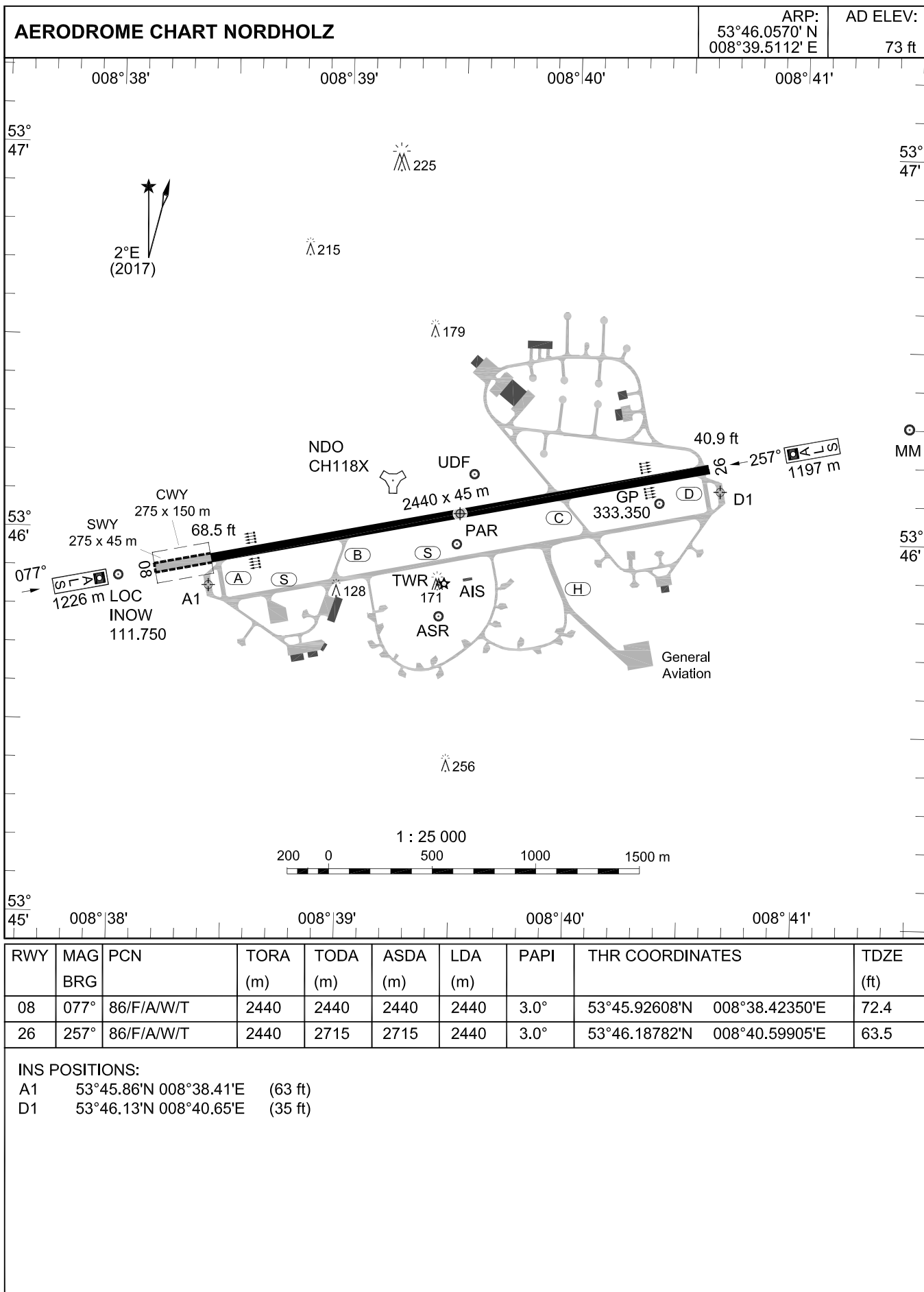
ETMN AD 2.23 Additional Information

NIL

ETMN AD 2.24 Charts related to an Aerodrome

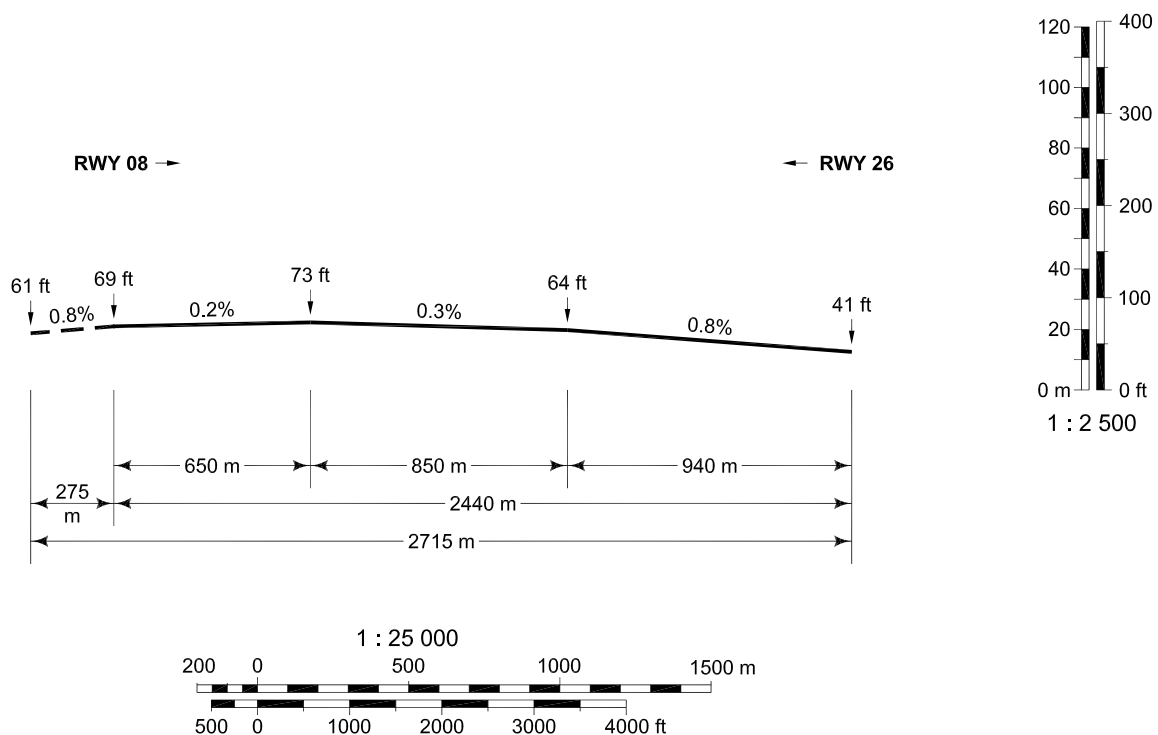
AERODROME CHART.....	AD 2 ETMN 2 - 1
LONGITUDINAL PROFILES OF RUNWAYS AND STOPWAYS.....	AD 2 ETMN 2 - 2
AERODROME CHART.....	CENOR FLIP VOL 2
MN 108 - 126.....	CENOR FLIP VOL 2 [AD 2 ETMN 4 - 1]*
TACAN RWY 08.....	CENOR FLIP VOL 2
ILS RWY 26.....	CENOR FLIP VOL 2 [AD 2 ETMN 3 - 2]*
TACAN RWY 26.....	CENOR FLIP VOL 2
NDB RWY 26.....	CENOR FLIP VOL 2 [AD 2 ETMN 3 - 1]*
ARR/DEP RWY 08/26 - 1.....	GEMIL FLIP VAD
ARR/DEP RWY 08/26 - 2.....	GEMIL FLIP VAD
AERODROME CHART.....	GEMIL FLIP VAD
ARR JET RWY 08/26 - 1.....	GEMIL FLIP VAD JET
ARR JET RWY 08/26 - 2.....	GEMIL FLIP VAD JET
AERODROME CHART.....	GEMIL FLIP VAD JET

* In the AIP Germany the charts have been taken over unchanged from the military version.



LONGITUDINAL PROFILES OF RUNWAYS AND STOPWAYS

NORDHOLZ



CHANGE: NEW CHART